



Space at Airbus

UNOOSA Virtual Conference
Space Economy: Africa In Focus

DEFENCE AND SPACE

30 June 2021

AIRBUS

DEFENCE AND SPACE

Telecommunications

Earth observation

Spacecraft equipment

[Airbus Amber]

Human spaceflight

Space exploration and science

Navigation

Services

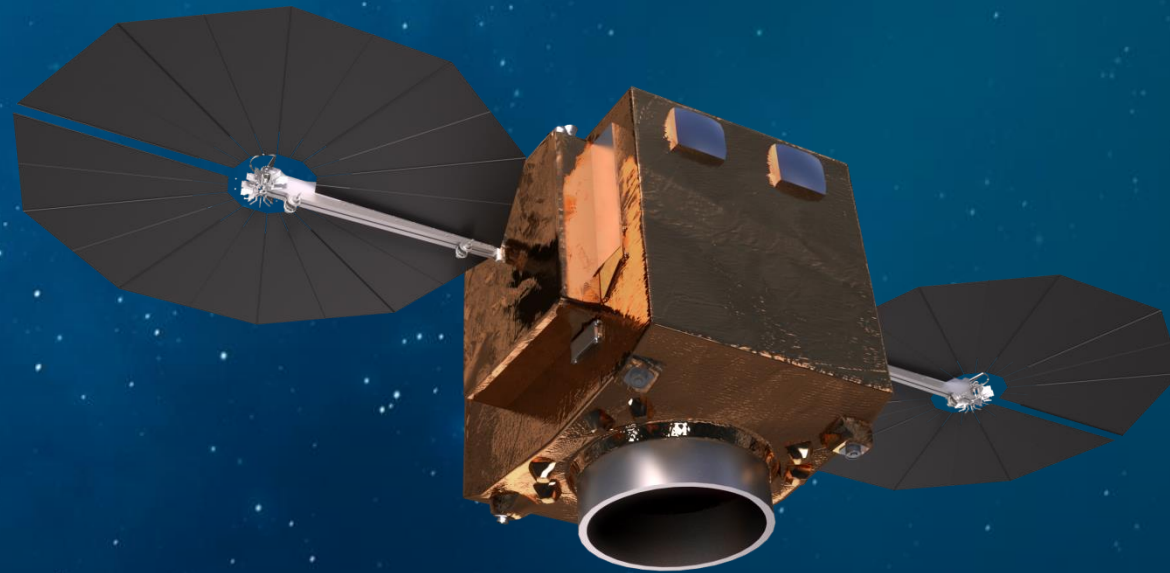
Ground segments

Launchers

© Copyright Airbus Defence and Space 2021 / Airbus Space Corporate Presentation

AIRBUS

@AirbusSpace



One single entity active all along the Space value chain: Airbus Defence and Space



Satellite
manufacturing



Launchers
equipment



Launchers
and launch
services



Ground
segment



Satellite
operations
(services)

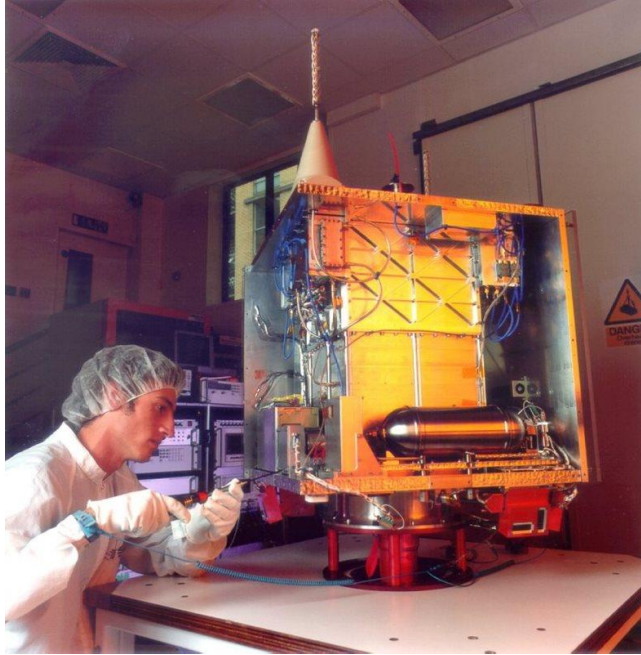


Earth observation /
Telecoms
(services)



Applications

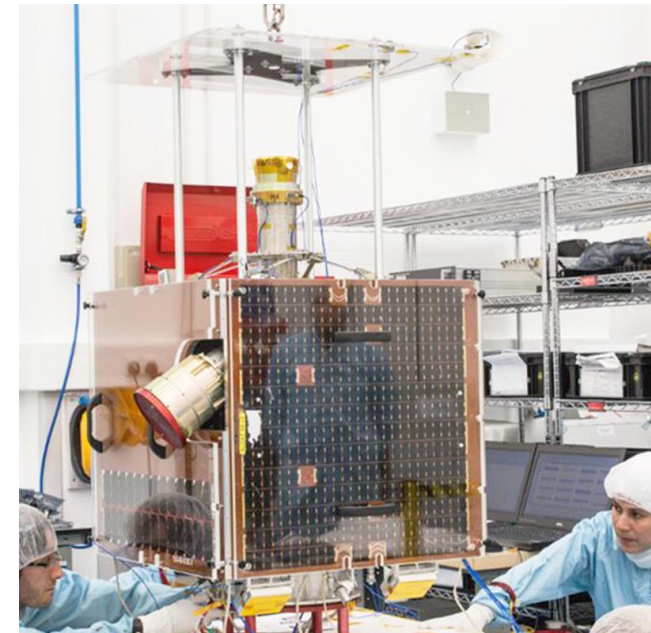
ALSAT-I – Launched 2002



- SSTL-100 platform
- 32m GSD Multispectral
- NIR, Red, Green
- 600 km swathe
- 12 customer engineers
- Disaster Monitoring Constellation

ALSAT-IB – Launched 2016

- SSTL-100 platform
- 24m multispectral imager and a 12m panchromatic imager
- Eighteen ASAL engineers
- Assembly, Integration and Test phase in Algeria
- Used for agricultural and disaster monitoring.



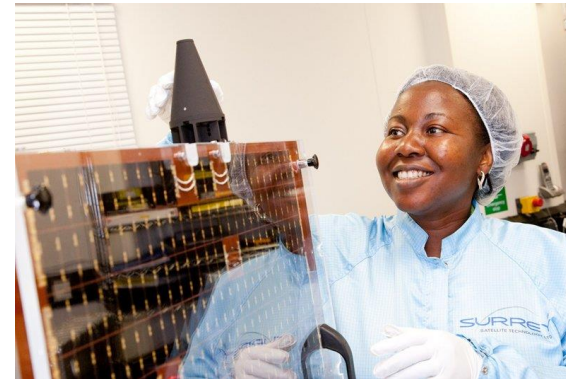
NigeriaSat-1 – Launched 2003

- SSTL-100 platform
- 32m GSD
- 600 km swathe
- 12 NASRDA engineers
- Disaster Monitoring Constellation



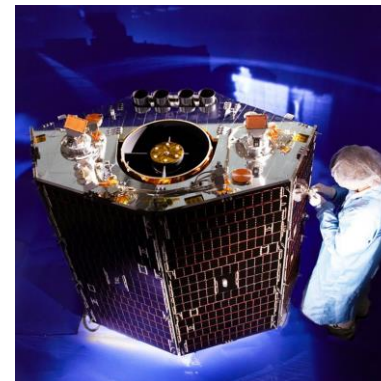
NigeriaSat-X – Launched 2011

- SSTL-100 platform
- Training model spacecraft
- 22m GSD 600 km swathe
- 26 NASRDA engineers
- Disaster Monitoring Constellation



NigeriaSat-2 – Launched 2011

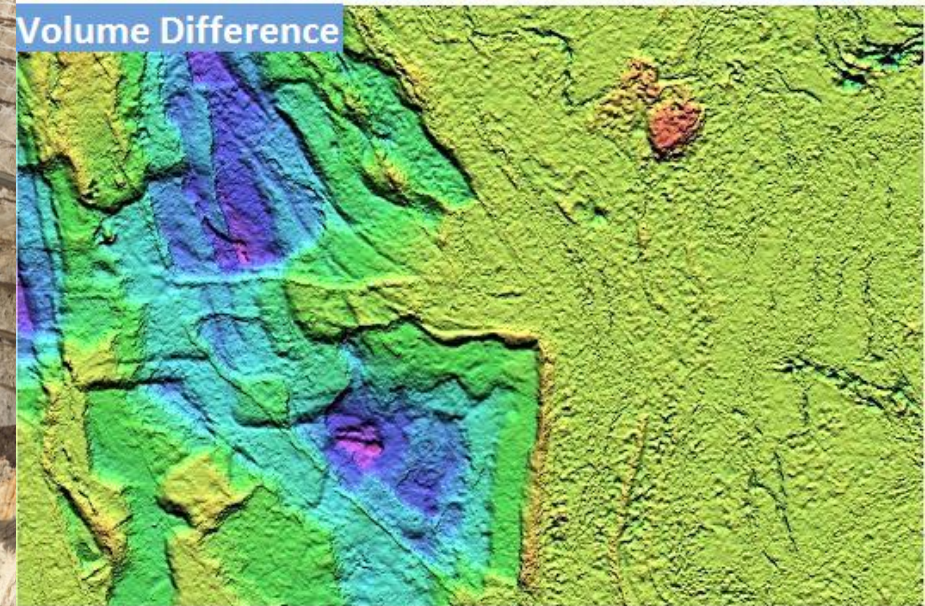
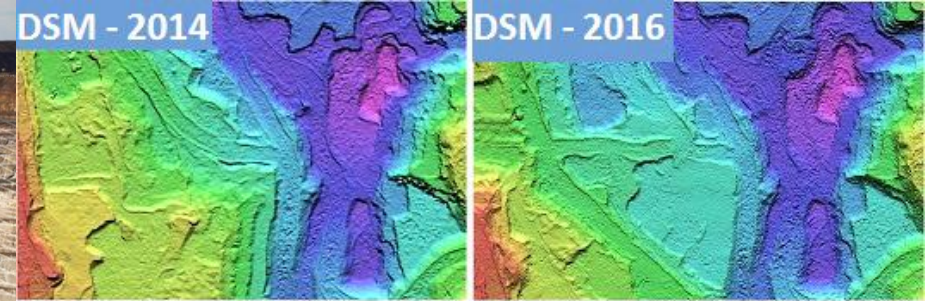
- SSTL-300 platform
- 2.5m panchromatic & 5m multispectral, 20km swath width.
- 26 NASRDA engineers



Stack Insight

Airbus product powered by Africa

Service for remote monitoring of **open pit mines**



Kilimo: A multi-scale technology approach to support agricultural value chain

Satellite-derived maps, geo-statistics & crop monitoring to support agricultural authorities



Model-derived soil & crop knowledge within the fields to support efficient & sustainable farming



Integrated digital ecosystem to adapt technology into agricultural management practices for extension officers & farmers

[County]

DATA

[Wards]

[Farmers]



AIRBUS

BizLab

The Aerospace Accelerator

**#Africa
4Future**

African Aerospace Accelerator

Remote Sensing for
Agriculture and Infrastructure



In partnership with:



giz



Implemented by:



Our future

Protect

Serve

Explore

Thank you

© Copyright Airbus Defence and Space 2021 / Airbus Space Corporate Presentation

Confidential and proprietary document.

This document and all information contained herein is the sole property of Airbus. No intellectual property rights are granted by the delivery of this document or the disclosure of its content. This document shall not be reproduced or disclosed to a third party without the expressed written consent of Airbus. This document and its content shall not be used for any purpose other than that for which it is supplied.

Airbus, its logo and product names are registered trademarks.